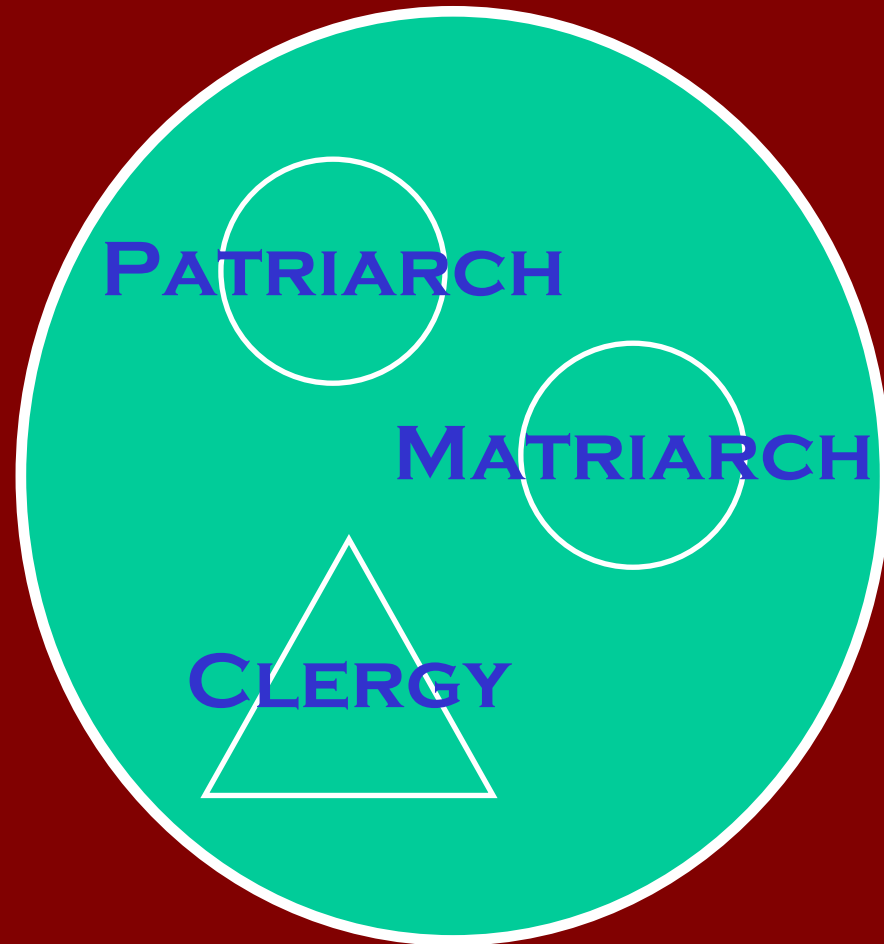


Church Size Characteristics

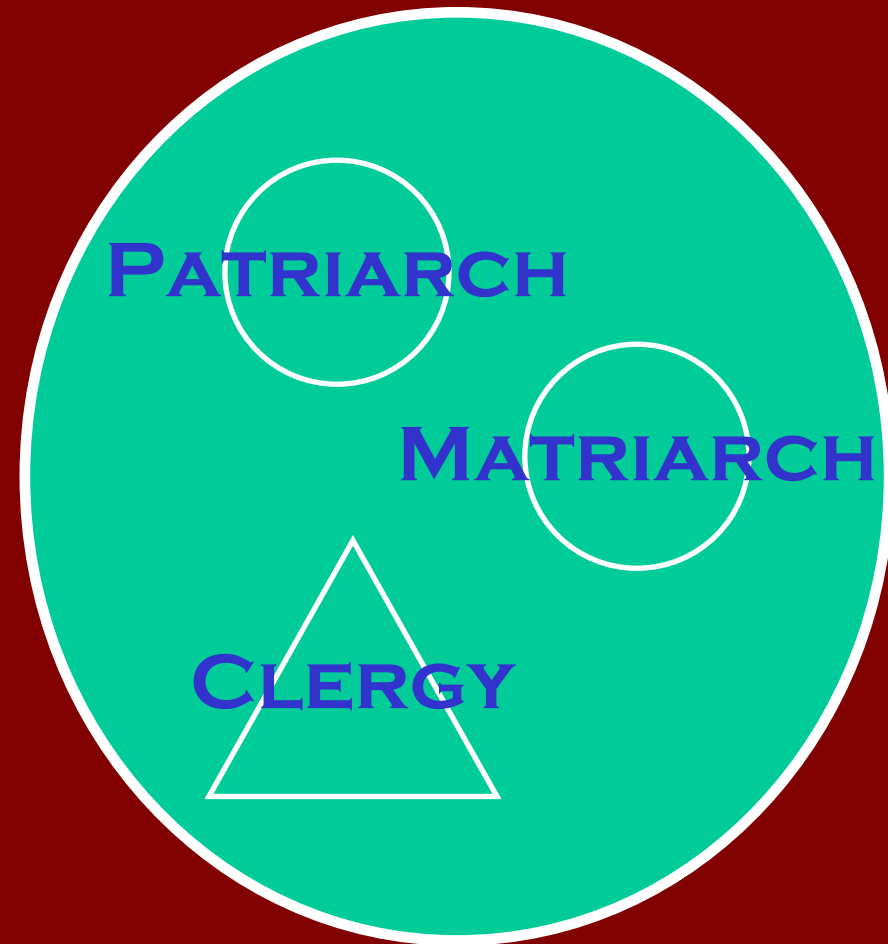
Family Church

- ◆ Minister is called in for preaching and pastoral care followed by leadership.
- ◆ Leadership from resident lay leaders - *matriarchs and/or patriarchs*



Up to 50/70 worshippers

Family Church



70 - 150 worshippers

- ◆ Due the increase in numbers the leadership structure tends to change to ...

Pastoral Church

- ◆ A “leadership circle” where the pastor needs to:
 - *delegate;*
 - *work with leadership;* and
 - *communicate to the whole*
- ◆ Feeling of congregational oneness - “we know each other!”



70 - 150 worshippers

Pastoral Church

- ◆ Spiritual needs met by *personal relationship with seminary trained pastor* - “direct access.”
- ◆ Previously informal leaders begin to find themselves toward the edges
- ◆ When growth occurs, any additional “staff” tend to remove the pastor a little bit more from the people and changes the pastors role.



70 - 150 worshippers

Pastoral Church

- ◆ Burn out is common in this sized church
- ◆ If the church still continues to grow the transition from the Pastoral Church to the next is the most difficult transition to make

Because

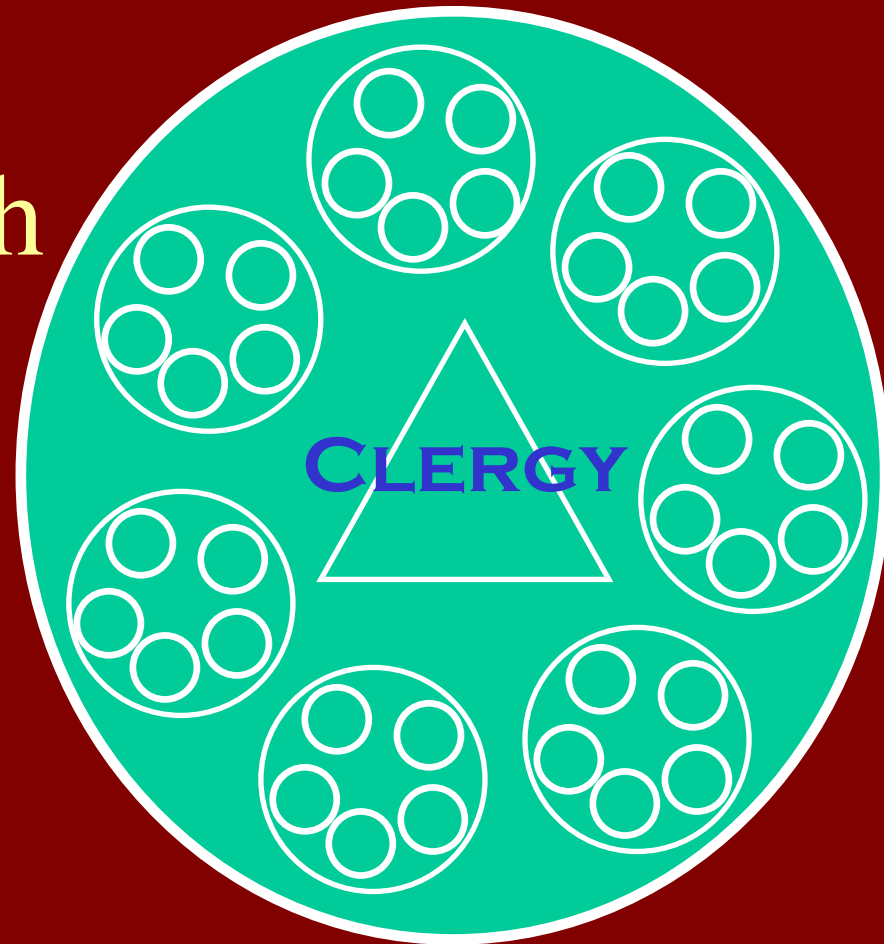
People lose direct contact with pastor; and

The larger size of the church loses its Family/Small Church feel

70 - 150 worshippers

Program Church

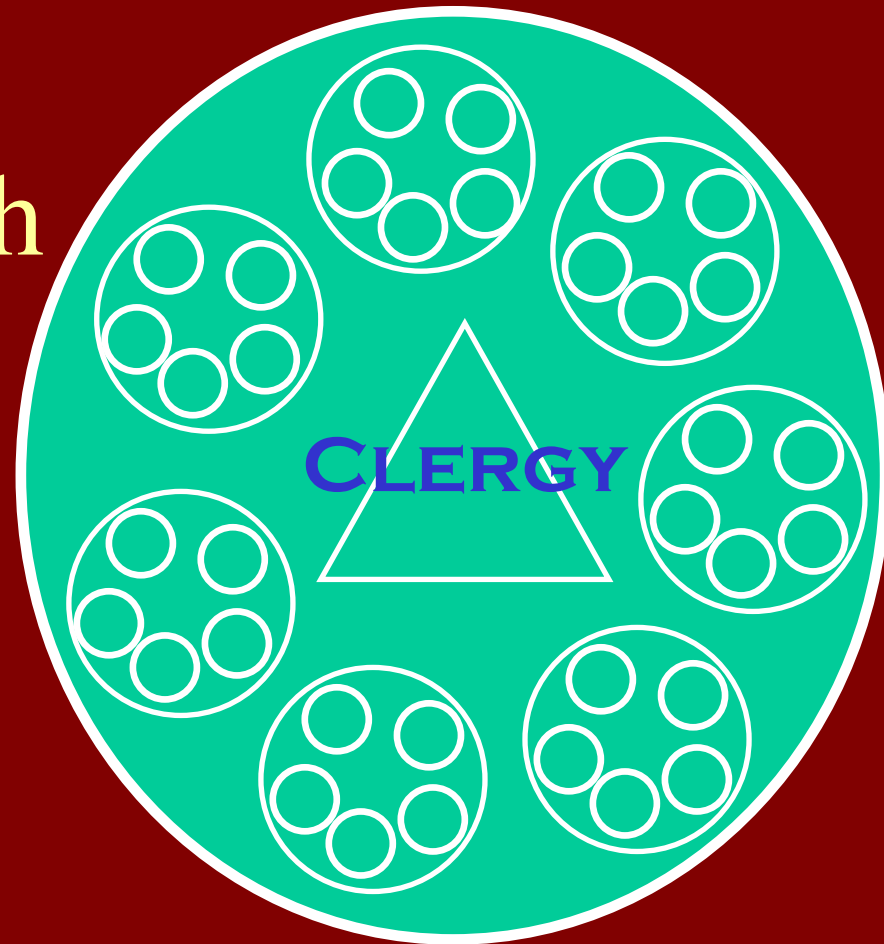
- ◆ This size church needs more structure – things don't just happen.
- ◆ Ministry through quality programs, *cells* or *small groups*, led by laity.



***150 - 350
worshippers***

Program Church

- ◆ Pastor steps back from ministry to “everyone”: he *plans, coordinates, supports lay leaders who now form the “front line”*; he now gives high priority to the spiritual and pastoral needs of the leaders.
- ◆ There must be **consensus**: pastoral strength at the centre of consensus.

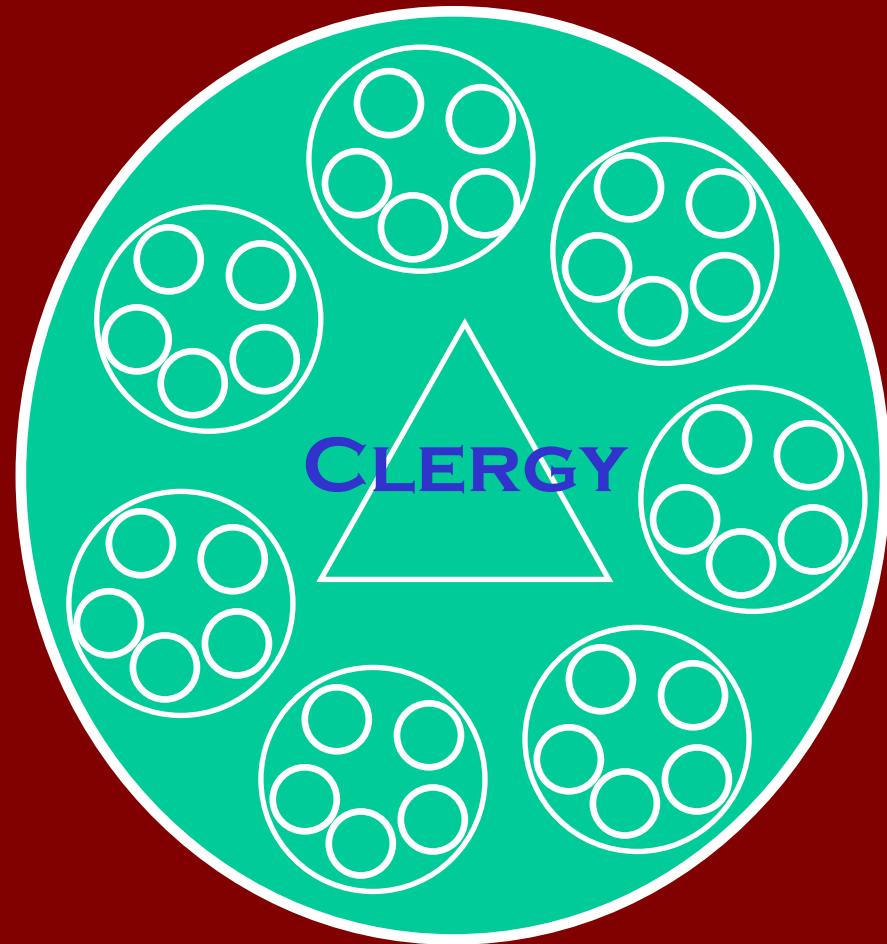


150 - 350
worshippers

Consensus (n.) general or widespread agreement.

Corporate Church

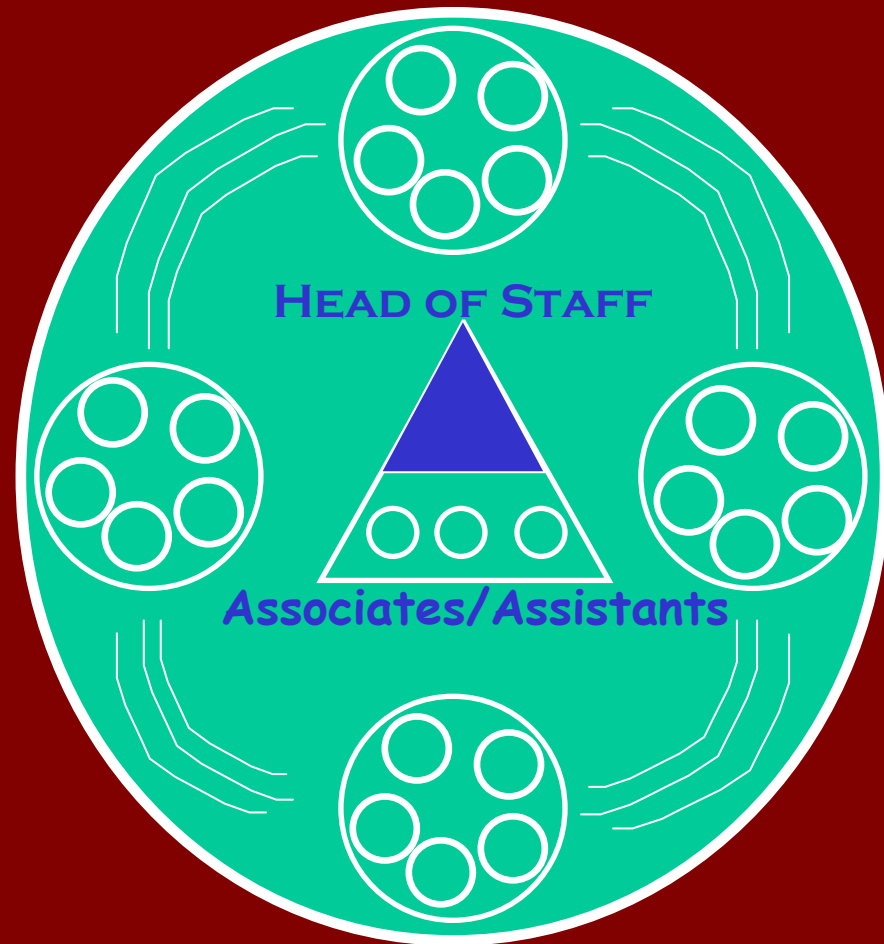
The church that starts to get numbers exceeding 350 worshippers needs to consider a further change in structure



*Over 350
worshippers*

Corporate Church

- ◆ Increased variety and high quality in programs run by the church.
- ◆ The Senior pastor will need to act as the Head of Staff with a number of Associate/Assistant pastors working under his/her support



***Over 350
worshippers***